

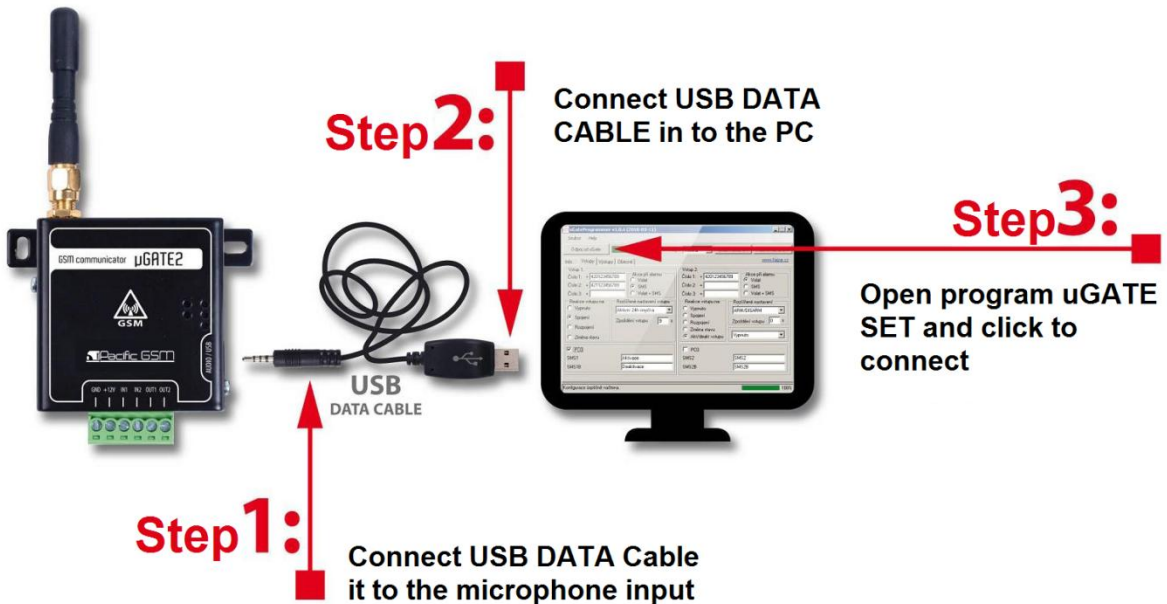
## USB data cable for easy configuration Pacific GSM communicators



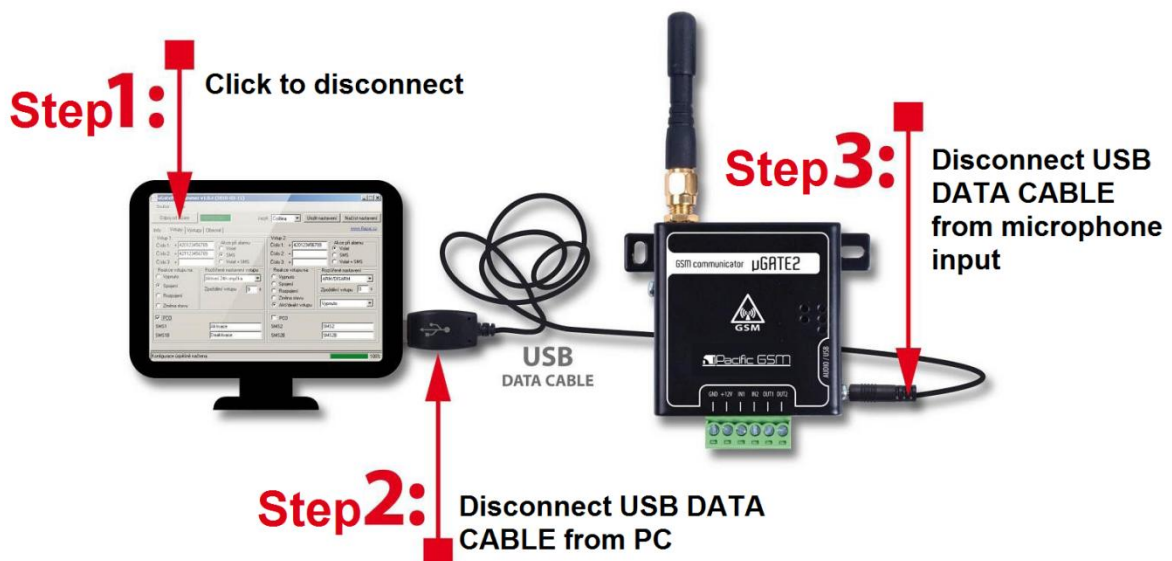
**Always follow the sequence operation!**



### Connection uGATE2 with PC



### Disconnect uGATE2 from PC



**Always follow the sequence operation!**

This procedure applies to the GSM-DIN2

## Quick Start

- 1) On the page <http://www.pacificgsm.co.nz/ugate2-p-96.html> download the PC programmer and the USB cable driver.
- 2) Install the programmer. Once installation is complete, install the USB driver interface.
- 3) Plug the USB cable in to the communicator (jack side), then connect the other end to the PC.

**Caution:** Always connect the communicator first and then connect in to your PC!

**See below connection modes for programming the communicator with the PC.**

At this point your computer system completes the driver installation.

**Note:** If you performed the above operation, the red LED on the communicator will now on (uGate2), or blue LED (DIN2), which indicates that the communicator is connected to a computer.

- 4) Turn on the programmer and click Connect to the device. Program automatically finds the port with the communicator and request a password (default set to 1234).
- 5) Enter the password and confirm it. If you entered the correct password the green LED on the communicator start blinking. Now you can perform all communicator settings

## PC connection modes

1. Connect the USB cable and then connect the supply voltage 7-15VDC
2. Insert the SIM card, connect the power supply and wait when the communicator logs on to a GSM network, connect the USB cable to the communicator and then to the PC.
3. On the already installed communicator connect USB cable to the communicator and then in to PC